

# Marion C. Seltzer PK-8 School

Historic West Cleveland Design Review Committee

Cleveland Landmarks Commission

July 10, 2025

#### DESIGN MODIFICATIONS FROM CONCEPT DESIGN

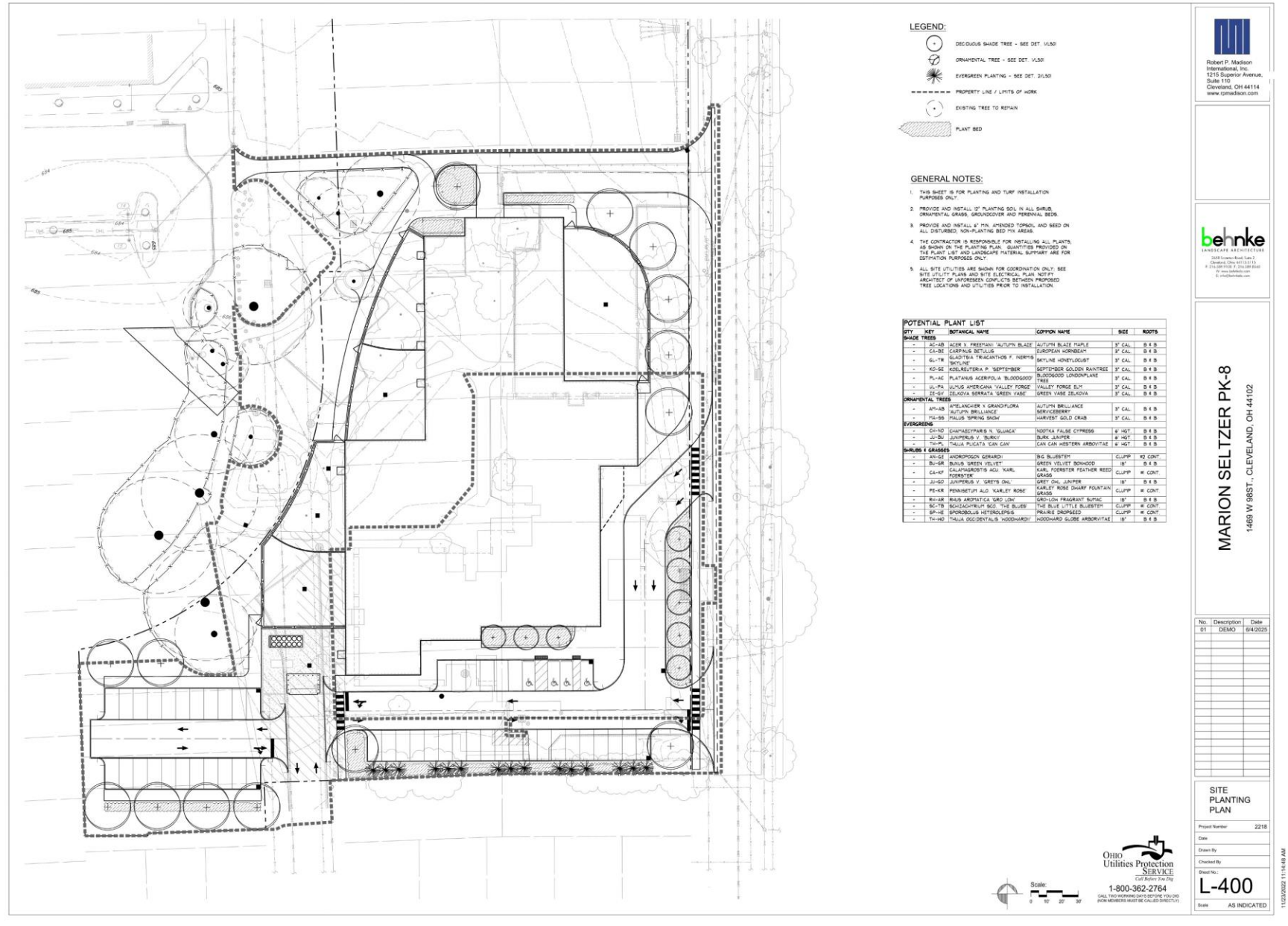
- Final site plan – accommodations for fire apparatus access - all sides
- Final landscaping plan. Coordination with Tree Preservation Plan.
- Exterior lighting especially around west side – Wall packs from the building, all sides. Parking areas with pole fixtures.
- Reviewed with City's Park design, which is in progress.
- The area of windows is twice the minimum required by the OFCC – 10% of classroom floor area.
- Metal siding details – 12" metal siding panel over insulation / air barrier on CMU back-up. Flashing at windows, transitions to masonry.
- Blue metal at canopy and sunshades in the family of the Rec Center spandrels.
- Brick detailing – straight-forward running bond – accent panels are both stack-bond and running-bond.
- Glazed brick accent inserts
  - o Permanent installation in lieu of changeable / temporary
  - o Accent belt at tactile level 3'-8" to 8'- 4" – kid level, in lieu of "postage stamp".
  - o Student workshop at Marion Seltzer – 8<sup>th</sup> grade Art Club
  - o Glazed brick patterns – Cranberry, Blue, Yellow, Orange – Utility size
    - Main Entry - Arcade
    - Outdoor Learning Garden - Flowers
    - North Stair Tower - Steps
    - PK-K Playground - Weave
    - 1-8 Playground - Puzzle

## CofA CONDITIONS FROM HISTORIC WEST CLEVELAND DESIGN REVIEW

- Final landscaping plan to be submitted to Staff.
- Document hard and soft surfaces on the site plan.
- Complete North Elevation door coordination.
- Submit Photometrics.
- Final glazing details to staff.



**Cleveland Metropolitan School District  
Marion C. Seltzer PK-8 School  
Landscape Plan – July 10, 2025**





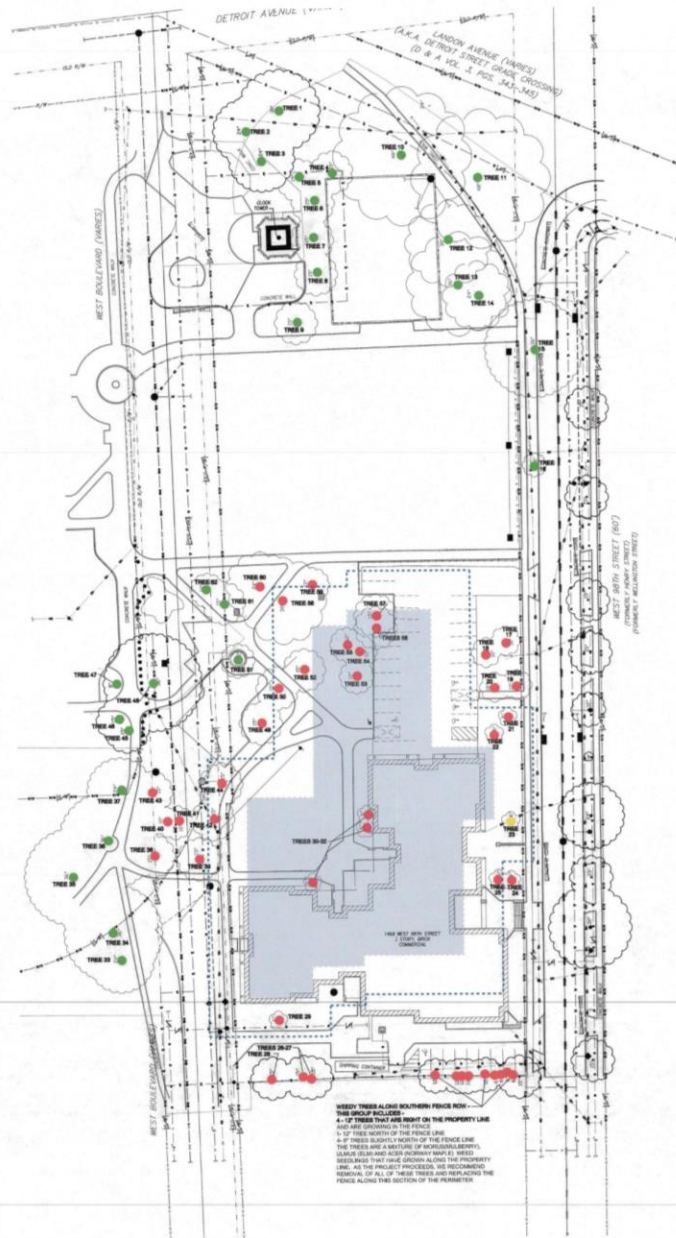
Deciduous & Evergreen Trees



Shrubs, Perennials, & Groundcovers

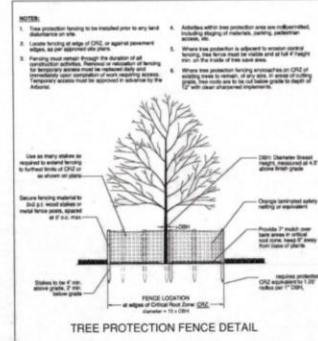






TREE PRESERVATION / REMOVAL LIST							
TREE NUMBER	TREE - SCIENTIFIC NAME	COMMON NAME	DBH"	CONDITION	PRESERVE	REMOVE	RELOCAT
1	QUERCUS ALBA	WHITE OAK	30"	SCAME BRANCH LOSS - NEEDS PRUNING AND FERTILIZING			
2	QUERCUS RUBRA	RED OAK	40"	GOOD			
3	TULA	LINDEN	20"	GOOD			
4	ACER PLATANOIDES	NORWAY MAPLE	15"	POOR CONDITION - BRANCH LOSS			
5	FRAXINUS	ASH	15"	POOR CONDITION - BRANCH LOSS			
6	FRAXINUS	ASH	15"	FAIR			
7	FRAXINUS	ASH	15"	FAIR			
8	FRAXINUS	ASH	15"	POOR CONDITION - BRANCH LOSS			
9	FRAXINUS	ASH	15"	POOR CONDITION - BRANCH LOSS			
10	TAXODIUM DISTICHUM	BALD CYPRESS	48"	GOOD			
11	PLATANOIDES	SYCAMORE	15"	FAIR			
12	TULA	LINDEN	20"	FAIR			
13	PLATANOIDES	SYCAMORE	25"	FAIR - LEANING			
14	CATALPA	CATALPA	25"	FAIR - WEAK WOODED TREE - LEANING			
15	PLATANOIDES	SYCAMORE	15"	FAIR - TREE IN R.O.V. - LIMBS IN CONTACT W/ UTILITY LINES			
16	ACER PLATANOIDES	NORWAY MAPLE	15"	GOOD - WEAK WOODED TREE - LEANING			
17	CERCIS CANADENSIS	EASTERN REDBUD	10"	FAIR			
18	CERCIS CANADENSIS	EASTERN REDBUD	10"	FAIR			
19	CERCIS CANADENSIS	EASTERN REDBUD	10"	FAIR			
20	CERCIS CANADENSIS	EASTERN REDBUD	10"	FAIR			
21	MORUS	MULBERRY TREE	27"	GOOD - WEAK WOODED AND MISERY TREE			
22	MORUS	MULBERRY TREE	27"	GOOD - WEAK WOODED AND MISERY TREE			
23	SYRINGA RETICULATA	JAPANESE TREE LILAC	15"	FAIR - LARGE LIMB IN NEWER LANE			X
24	SYRINGA RETICULATA	JAPANESE TREE LILAC	15"	FAIR - WEAK WOODED AND MISERY TREE			
25	LELUMS	ELM	15"	POOR - WEEDY SEEDLING ON FENCE LINE			
26	LELUMS	ELM	15"	POOR - WEEDY SEEDLING ON FENCE LINE			
27	ACER PLATANOIDES	NORWAY MAPLE	15"	GOOD - WEEDY SEEDLING ON FENCE LINE			
28	ACER PLATANOIDES	NORWAY MAPLE	15"	GOOD - WEAK WOODED AND MISERY TREE			
29	MORUS	MULBERRY TREE	6"	FAIR			
30	MALUS	CRAB	6"	FAIR			
31	MALUS	CRAB	6"	FAIR			
32	MALUS	CRAB	6"	FAIR			
33	PRUNUS	SPRUE	15"	FAIR - LAMDED UP AND LEANING			
34	QUERCUS PALUSTRIS	PIN OAK	35"	GOOD - NEEDS SOME PRUNING			
35	QUERCUS PALUSTRIS	PIN OAK	35"	GOOD - NEEDS A LOT OF PRUNING			
36	QUERCUS PALUSTRIS	PIN OAK	35"	GOOD - SOME PRUNING			
37	GRNIO	GRNIO	24"	POOR - LARGE LIMB AND BRANCH LOSS ON ONE HALF			
38	ACER PLATANOIDES	NORWAY MAPLE	15"	GOOD - WEEDY SEEDLING ON FENCE LINE			
39	ACER PLATANOIDES	NORWAY MAPLE	15"	GOOD			
40	MORUS	MULBERRY TREE	15"	POOR - WEEDY SEEDLING			
41	PRUNUS	SPRUE	15"	FAIR			
42	ACER PLATANOIDES	NORWAY MAPLE	15"	FAIR			
43	GLESTHIA TRIN. NERMS	HONEYLOCUST	15"	FAIR - NEED SIGNIFICANT PRUNING			
44	GRNIO	GRNIO	24"	GOOD			
45	ACER PLATANOIDES	NORWAY MAPLE	15"	GOOD - NEED SIGNIFICANT PRUNING			
46	QUERCUS PALUSTRIS	PIN OAK	35"	GOOD			
47	QUERCUS PALUSTRIS	PIN OAK	35"	FAIR - WEEDY SEEDLING WITH SPRUCE GROWING WITH IT			
48	QUERCUS PALUSTRIS	PIN OAK	35"	GOOD			
49	LOGANBERRY SYL	BITTLEWORM	15"	GOOD			
50	GLESTHIA TRIN. NERMS	HONEYLOCUST	15"	GOOD			
51	ACER PLATANOIDES	NORWAY MAPLE	15"	GOOD			
52	ACER PLATANOIDES	NORWAY MAPLE	15"	GOOD			
53	PRUNUS	SPRUE	15"	GOOD			
54	PRUNUS	SPRUE	15"	GOOD			
55	PRUNUS	SPRUE	15"	GOOD			
56	PRUNUS	SPRUE	15"	GOOD			
57	MORUS	MULBERRY TREE	MULTISTEM4-12"	GOOD - WEEDY SEEDLING			
58	ACER PLATANOIDES	NORWAY MAPLE	15"	GOOD			
59	ACER PLATANOIDES	NORWAY MAPLE	15"	GOOD - WEAK WOODED PLANT - DESTRUCTIVE ROOTS			
60	ACER PLATANOIDES	NORWAY MAPLE	15"	GOOD			
61	ACER PLATANOIDES	NORWAY MAPLE	15"	GOOD - WEAK WOODED PLANT - DESTRUCTIVE ROOTS			
62	GLESTHIA TRIN. NERMS	HONEYLOCUST	15"	GOOD			
63	PRUNUS	SPRUE	15"	GOOD			

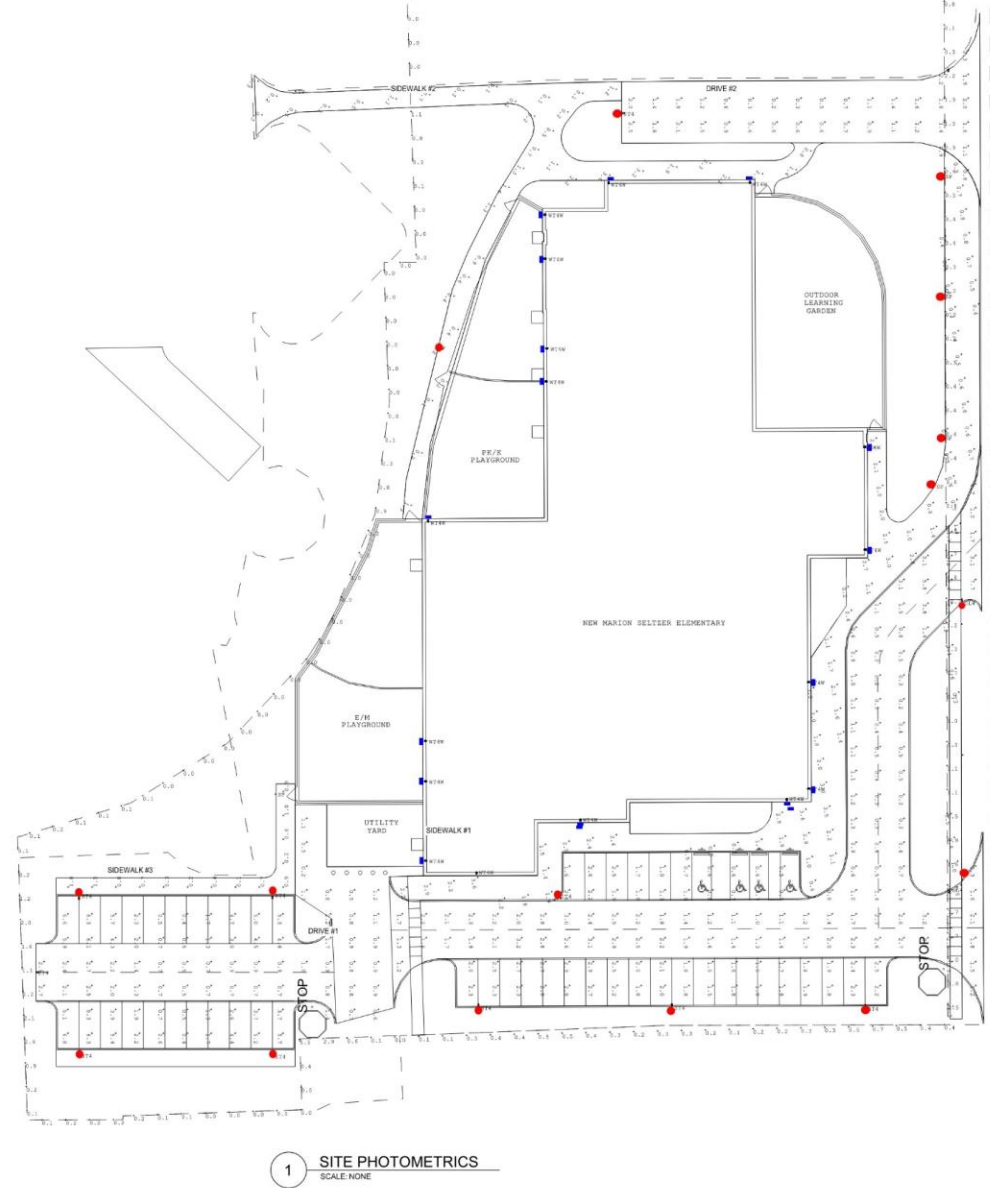
**NOTE**



- SURVEY LEGEND**

PRESERVATION PLAN | LEGEND

MARION C. SELTZER PK-8 SCHOOL  
TREE PRESERVATION PLAN



■ Wall-mounted fixture  
● Pole-mounted fixture

Calculation Zone	Average	Maximum	Minimum	Avgr/min
Drive #1	1.94	8.6	0.2	9.7
Drive #2	1.17	2.5	0.2	5.65
Sidewalk #1	1.48	3.6	0.2	7.4
Sidewalk #2	0.93	3.6	0.1	9.3
Sidewalk #3	0.72	1.8	0.1	7.2
Site Line	0.51	10.1	0.0	



	Project 23-36827-6 CLARK PK-8 SCHOOL	Catalog Number: DSX1 LED P1 40K 70CRI T4M MVOLT HS RPA NLTAIR2 PIRHN DDBXD	Type <b>SL4H</b> Dark Bronze
	Submitted By JACK H DUFFY	Note: photometric	



Catalog Number	
Notes	
Type	

**Introduction**  
The modern styling of the D-Series features a highly refined aesthetic that blends seamlessly with its environment. The D-Series offers the benefits of the latest in LED technology into a high performance, high efficacy, long-life luminaire.

The photometric performance results in sites with excellent uniformity, greater pole spacing and lower power density. D-Series outstanding photometry aids in reducing the number of poles required in area lighting applications with typical energy savings of 65% and expected service life of over 100,000 hours.

#### Ordering Information EXAMPLE: DSX1 LED P7 40K 70CRI T3M MVOLT SPA NLTAIR2 PIRHN DDBXD

DSX1 LED	LEDs	Color temperature <sup>1</sup>	Color Rendering Index <sup>2</sup>	Distribution	Voltage	Mounting
Series						
DSX1 LED	Forward optics	(this section 70CRI only)				
P1	P6	30K 3000K	70CRI	ATR Automatic front row	120V-277V <sup>1</sup>	Shipped included
P2	P7	40K 4000K	70CRI	T1S Type I short	120V-480V <sup>1</sup>	SPA Square pole mounting (81 drilling)
P3	P8	50K 5000K	70CRI	T2M Type II medium	XVOLT (277V - 480V) <sup>1</sup>	RPA Round pole mounting (81 drilling)
P4	P9	(this section 80CRI only, extended lead times apply)		T3M Type III medium	120V-480V <sup>1</sup>	SPAS Square pole mounting (81 drilling)
P5	Related optics			T3LG Type III low glare <sup>1</sup>	208V-480V <sup>1</sup>	BPAS Round pole mounting (81 drilling)
P10	P11	27K 2700K	80CRI	T4M Type IV medium	240V-480V <sup>1</sup>	SPAN Square narrow pole mounting (81 drilling)
P11	P12	35K 3500K	80CRI	T4LG Type IV low glare <sup>1</sup>	277V-480V <sup>1</sup>	WBA Wall bracket <sup>1</sup>
P12	P13	40K 4000K	80CRI	T4M Type IV medium	347V-480V <sup>1</sup>	MA Mast arm adapter (mounts on 2.3/8" OD horizontal tension)
P13	P14	50K 5000K	80CRI	T4M Type IV medium	480V-480V <sup>1</sup>	

Control options	Other options	Finish required
Shipped installed	Shipped installed	DDDB Dark Bronze
NLTAIR2 PIRHN	SPD20K 20W surge protection	DLDB Black
PER	IS "Incode shield (black finish standard)"	DNAD Natural Aluminum
PER	L90 Left rotated optics <sup>1</sup>	DWAD White
PER	R90 Right rotated optics <sup>1</sup>	DDDBX Textured dark bronze
PER	CCE Coastal Construction <sup>1</sup>	DLDBX Textured black
PER	HA 50°C ambient operation <sup>1</sup>	DNADX Textured natural aluminum
PER	BAA Buy American (Act Compliant)	DWDBX Textured white
PER	SE Single Pole (208, 240, 480V) <sup>1</sup>	
PER	DF Double Pole (208, 240, 480V) <sup>1</sup>	
PER	Shipped separately	
PER	EGSR External Glare Shield (reversible, field install required, matches housing finish)	
PER	ESDB End Sides (field install required)	

	Project 23-36827-6 CLARK PK-8 SCHOOL	Catalog Number: WDGE3 LED P1 40K 80CRI R4 MVOLT SRM DDBXD	Type <b>SLW</b> Dark Bronze
	Submitted By JACK H DUFFY	Note: WSO discontinued	



Catalog Number	
Notes	
Type	

**Introduction**  
The WDGE LED family is designed to meet specifier's every wall-mounted lighting need in a widely accepted shape that blends with any architecture. The clean rectilinear design comes in four sizes with lumen packages ranging from 1,200 to 25,000 lumens, providing a true site-wide solution. Embedded with nLight® AIR wireless controls, the WDGE family provides additional energy savings and code compliance.

WDGE3 has been designed to deliver up to 12,000 lumens through a precision refractive lens with wide distribution, perfect for augmenting the lighting from pole mounted luminaires.

#### WDGE LED Family Overview

Luminaire	Standard EM, 0°C	Cold EM, -20°C	Sensor	P1	P2	P3	P4	P5	P6
WDGE1 LED	4W	---	---	1,200	2,000	---	---	---	---
WDGE2 LED	10W	18W	Standalone / nLight	1,200	2,000	3,000	4,500	6,000	---
WDGE3 LED	15W	18W	Standalone / nLight	7,500	8,500	10,000	12,000	---	---
WDGE4 LED	---	---	Standalone / nLight	12,000	16,000	18,000	20,000	22,000	25,000

#### Ordering Information EXAMPLE: WDGE3 LED P3 40K 70CRI R3 MVOLT SRM DDBXD

Series	Package	Color Temperature	CRI	Distribution	Voltage	Mounting	Shipped separately
WDGE3 LED	P1	30K 3000K	70CRI	R2 Type 2	120V-277V <sup>1</sup>	Shipped included	AWSS 3/8" x 3/8" Architectural wall spacer
	P2	40K 4000K	80CRI	R3 Type 3	120V-480V <sup>1</sup>	SRM Surface mounting bracket	PBBW Surface-mounted back box (top, left, right, conduit entry). Use when there is no junction box available.
	P3	50K 5000K	80CRI	R4 Type 4	120V-480V <sup>1</sup>	TCW Indirect (cove) ceiling washer bracket (dry, damp locations only) <sup>1</sup>	
	P4	---	---	RFT Forward Throw	---	---	

Options	Standard Sensors/Controls	Finish
E1SWH Emergency battery backup, Certified in CA Title 20 MAJLBS (15W, 5°C min)	PIR Bi-level (100/35%) motion sensor for 8-15' mounting heights. Intended for use on switched circuits with external dusk to dawn switching.	DDDBX Dark Bronze
E20WC Emergency battery backup, Certified in CA Title 20 MAJLBS (18W, -30°C min)	PIRHN Bi-level (100/35%) motion sensor for 15-30' mounting heights. Intended for use on switched circuits with external dusk to dawn switching.	DLDBX Black
PE Photocell, Sunset Type <sup>1</sup>	PIRHFCEV Bi-level (100/35%) motion sensor for 8-15' mounting heights with photocell pre-programmed for dusk to dawn operation.	DNADX White
DMG 0-10V dimming wires pulled outside fixture (for use with an external control, ordered separately) <sup>1</sup>	PIRHFCEV Bi-level (100/35%) motion sensor for 15-30' mounting heights with photocell pre-programmed for dusk to dawn operation.	DSDBX Sandstone
BCE Bottom conduit entry for back box (PIRHN). Total of 4 entry points.	Networked Sensors/Controls	DDDBX Textured dark bronze
SPD20K 20W Surge pack <sup>1</sup>	NLTAIR2 PIRHN nLight® AIR Wireless enabled bi-level motion/ambient sensor for 8-15' mounting heights.	DLDBX Textured black
BAA Buy American (Act Compliant)		DNADX Textured natural aluminum

Accessories	Notes
WDGE4K DDBXD WDGE3 Black Architectural Wall Spacer (specify finish)	1 347V and 480V not available with E1SWH and E20WC.
WDGE3PWR DDBXD WDGE3 Surface-mounted back box (specify finish)	2 Not qualified for DALI. Not available with emergency battery backup or sensors/controls.
	3 PE not available in 480V and with sensors/controls.
	4 DMG option not available with sensors/controls.
	5 Not available with E20WC option.



**"KHAKI MATT"**  
UTILITY FACE BRICK



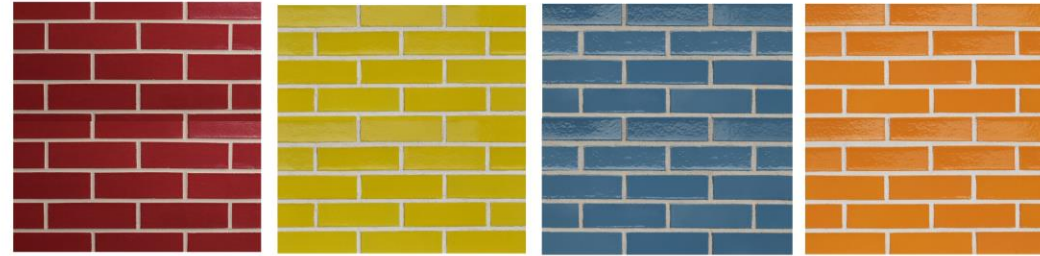
**"TAWNY BEIGE WIRECUT"**  
UTILITY FACE BRICK



**"HARVEST"**  
SPLIT FACED EMERALD CMU BLOCK



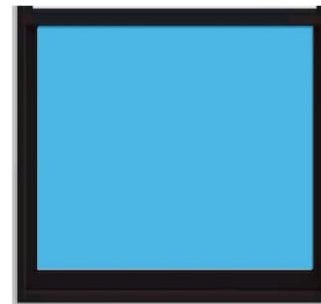
**WOOD-GRAINED METAL PANEL**



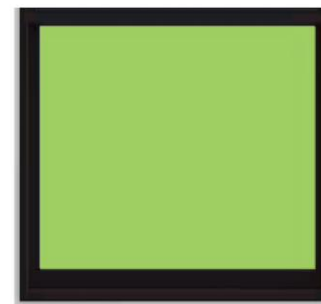
**"VARIED GLAZE"**  
GLAZED BRICK



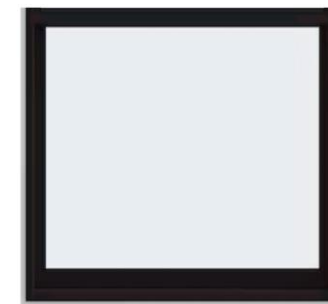
**BLUE-ACCENT METAL PANEL**  
SUN SHADING WINDOW CANOPY



**BLUE GLASS**



**GREEN GLASS**

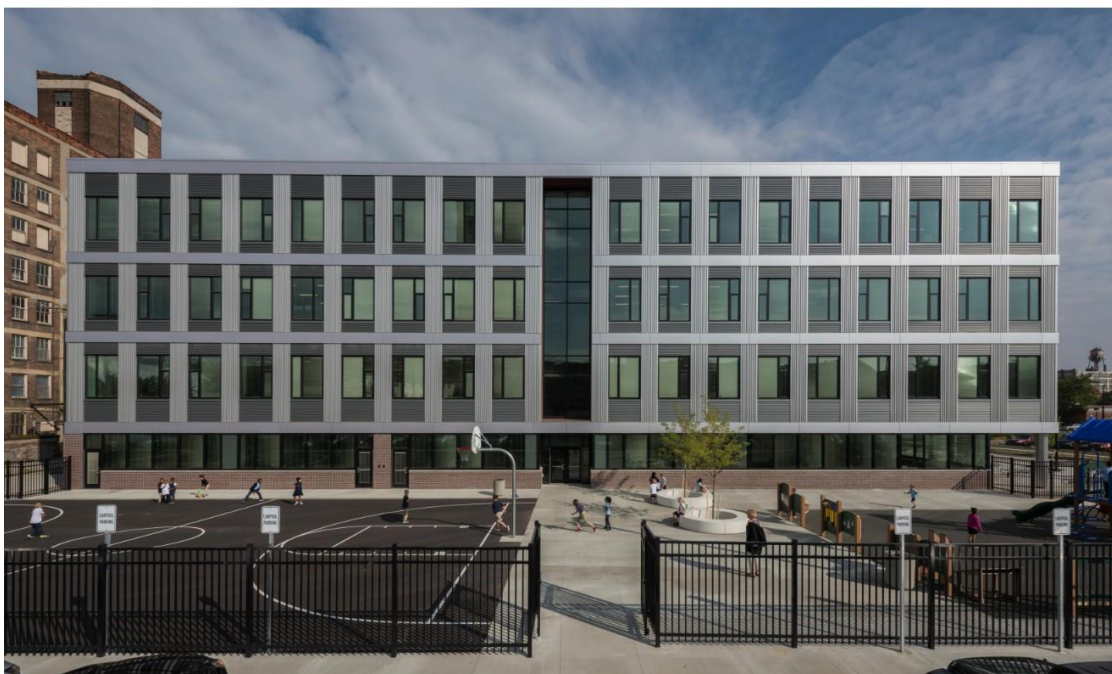


**CLEAR GLASS**











Cleveland Metropolitan School District  
 Marion C. Seltzer PK-8 School  
 Materials– July 10, 2025







# REFLECTING THE DIVERSE LANGUAGE CULTURES

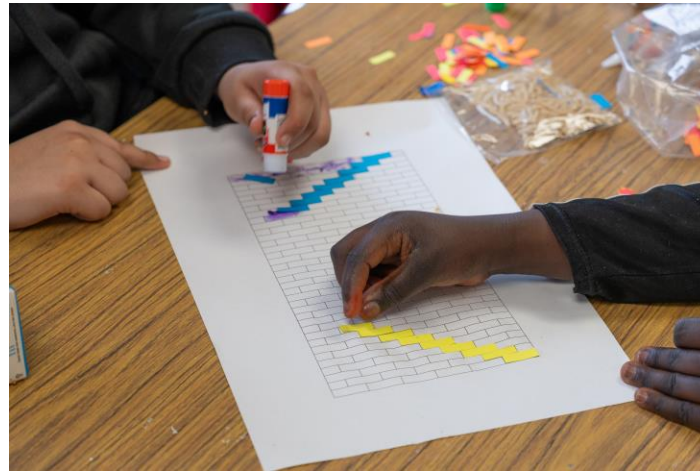
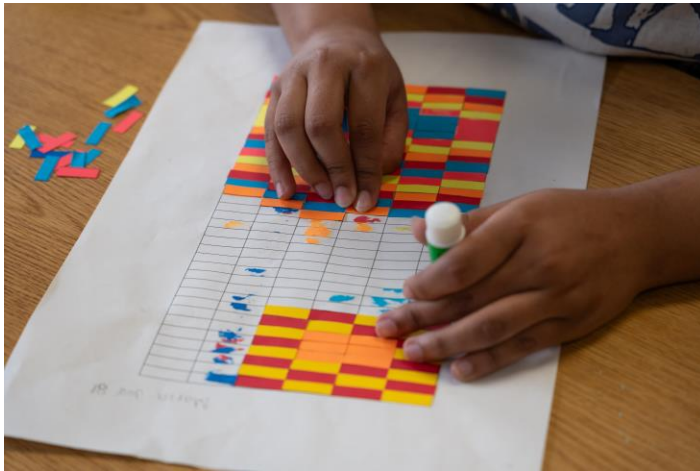
LANGUAGES AND WOVEN ART AROUND THE WORLD

LANGUAGES SPOKEN:

- SPANISH ●
- KINYARWANDA ●
- KURDISH ●
- MASALIT ●
- PASHTO ●
- ARABIC ●



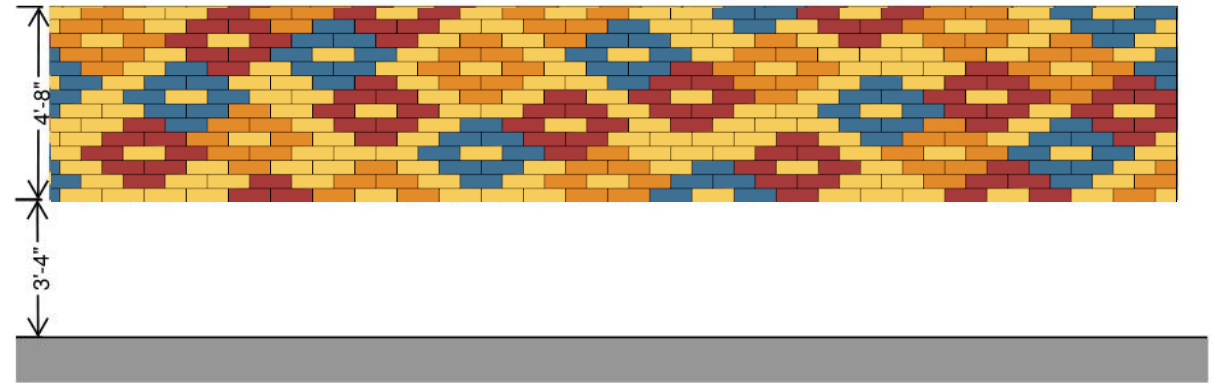




## STUDENT WORKS

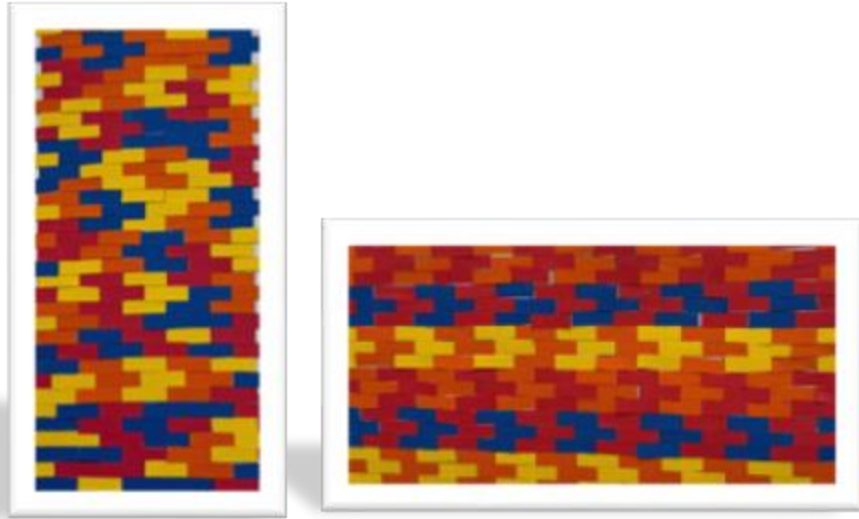


## FINAL PANEL DESIGNS

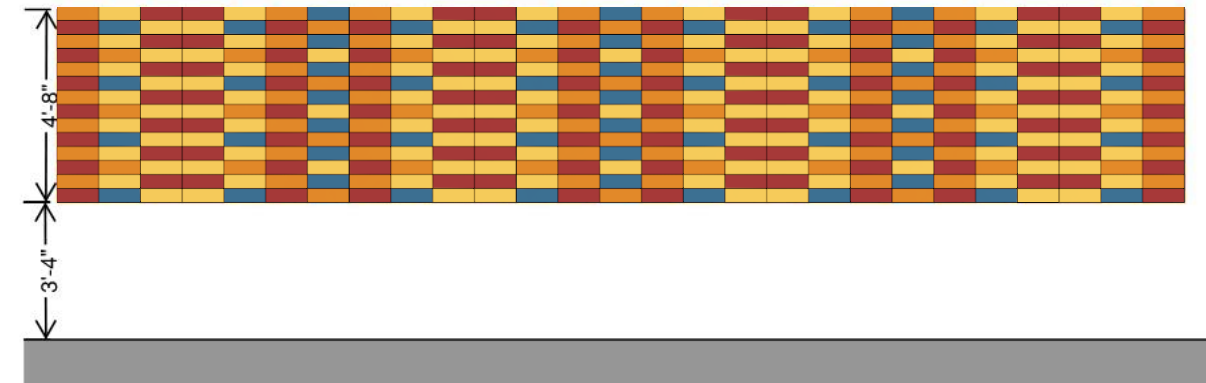
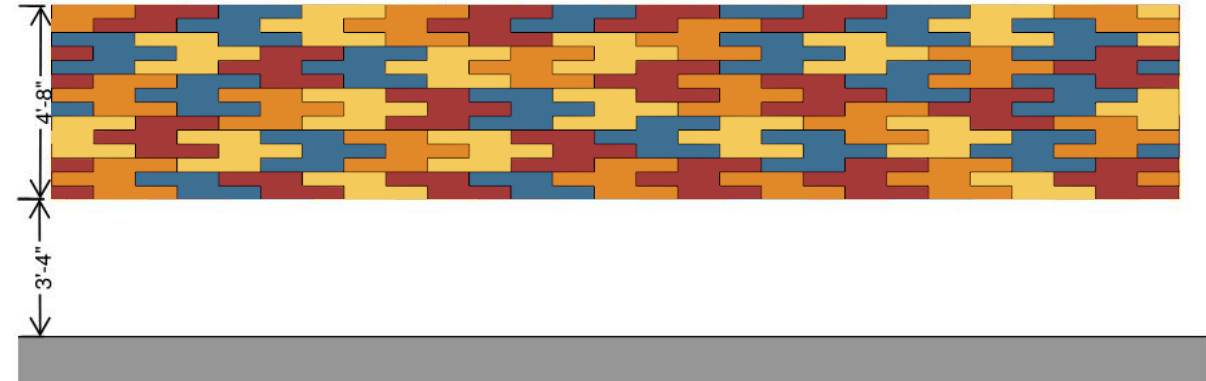




## STUDENT WORKS

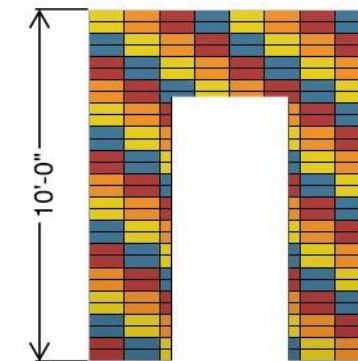
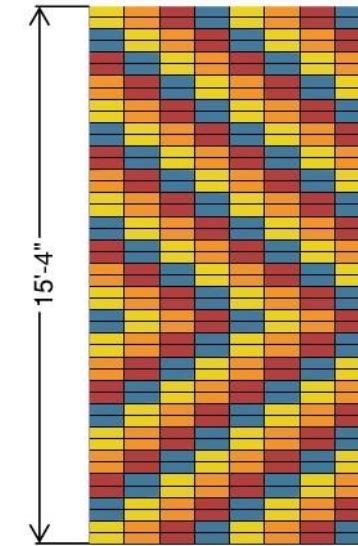
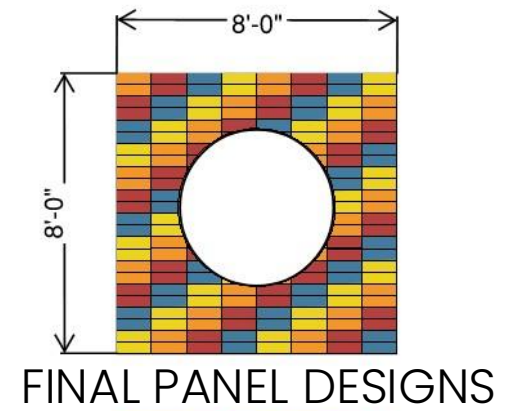


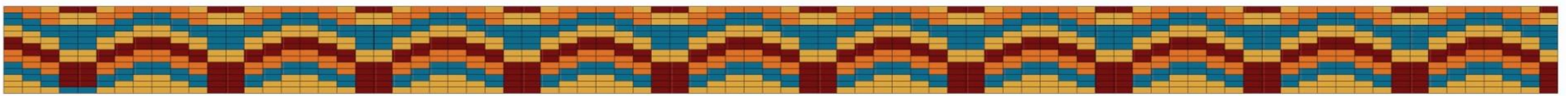
## FINAL PANEL DESIGNS



## FINAL PANEL DESIGNS

## STUDENT WORKS

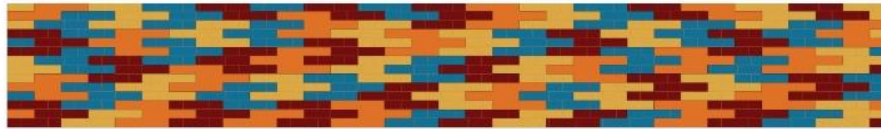




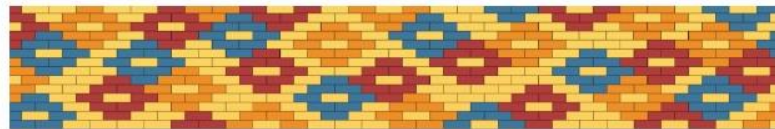
FRONT ENTRY



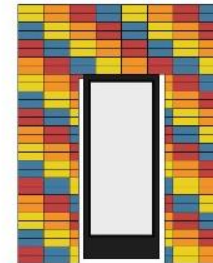
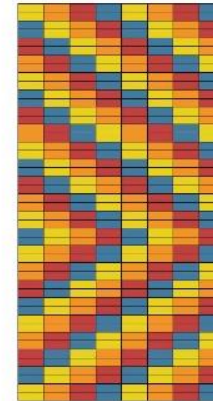
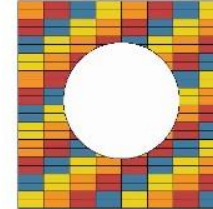
PLAYGROUND I



PLAYGROUND II



LEARNING GARDEN



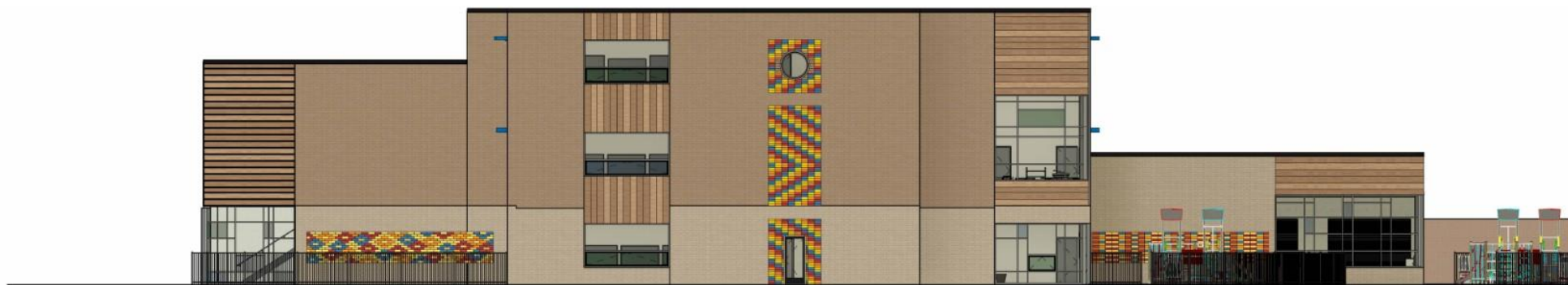
CLOCK TOWER

Cleveland Metropolitan School District  
Marion C. Seltzer PK-8 School





East Elevation



North Elevation

Cleveland Metropolitan School District  
Marion C. Seltzer PK-8 School

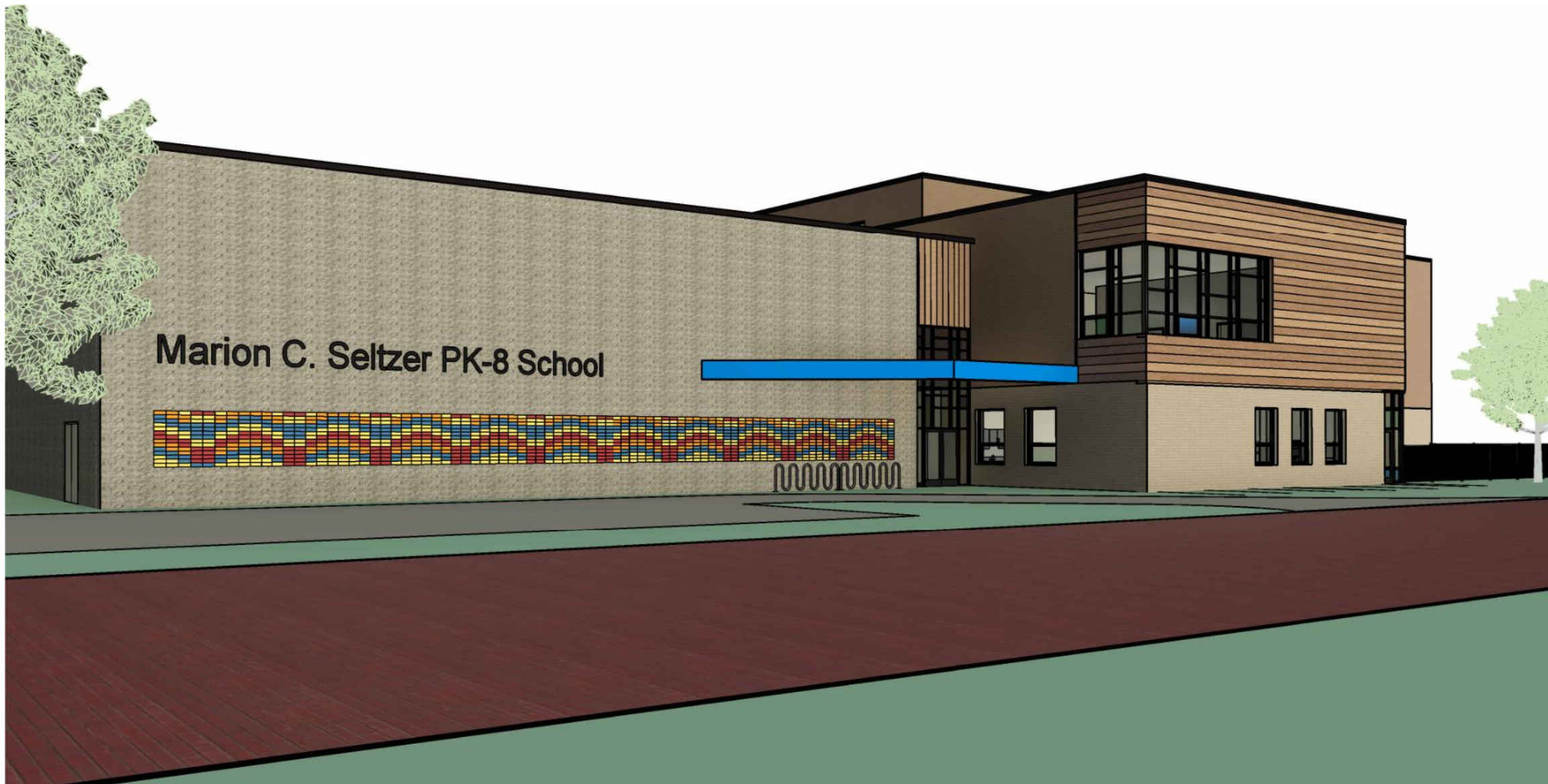


East Elevation



North Elevation





Cleveland Metropolitan School District  
Marion C. Seltzer PK-8 School



Cleveland Metropolitan School District  
Marion C. Seltzer PK-8 School





